

KARUIDI CATALOG

MUCHI

Guangdong Muchi Furniture Co.Ltd. located in Foshan,China. With MC CASA,KARUIDI,TURRI,and SEADIVIA sub brands.

We focus on high-end villa furniture custom industry for 15years,providing customer swith one-stop customized service.

We own 30000 square meters of production base,we have formed a complete production line with advanced equipment and manufacturing technology at home and abroad. We focus on high quality, strict in selection and screening materials,ingenious craftsmanship,and make the details wonderful.

We provide a full range of services and provide high-quality furniture living space for millions of families around the world. Adhering to the belief that details determine success or failure, it has never changed in 15years.

DINNING SERIES

K A R U I D I



» IMAGE COMPOSITION

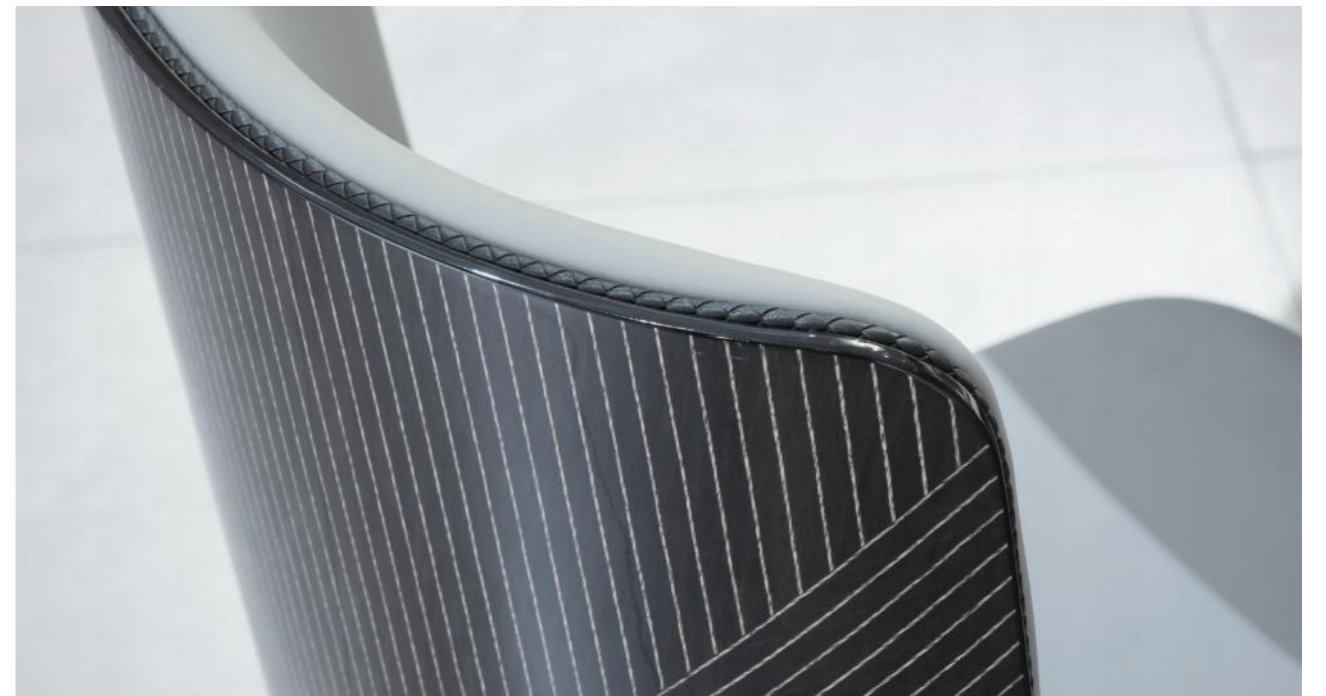
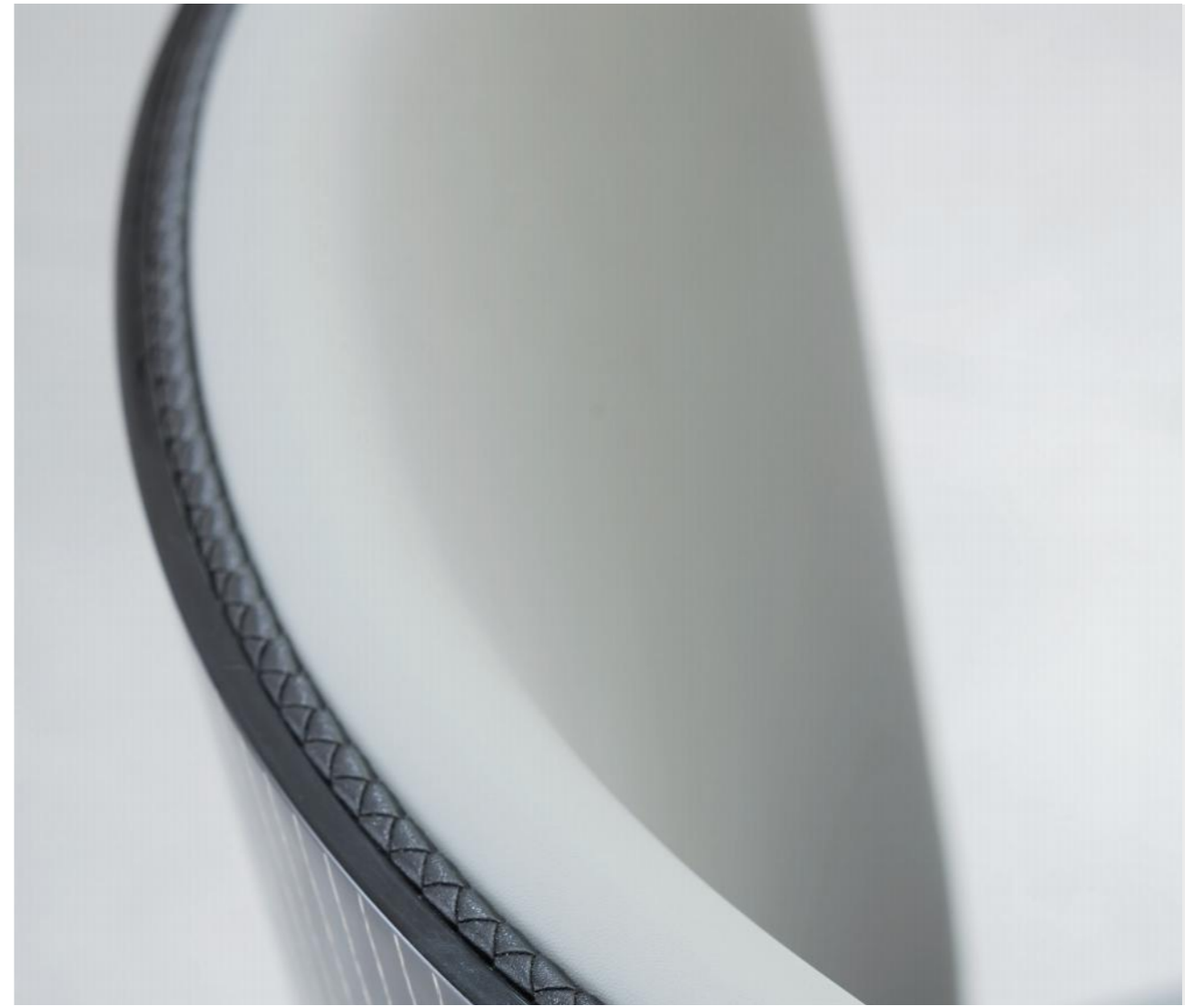
AK-004E Dining Table, ML-65B Dining Chairs
AK-066N Sideboard

» INFORMATION

Dining Table: 1350*760+800mm/1500*760+900mm
Sideboard: 1510*465*850mm

Dining Chairs: 430*530*840mm







» IMAGE COMPOSITION

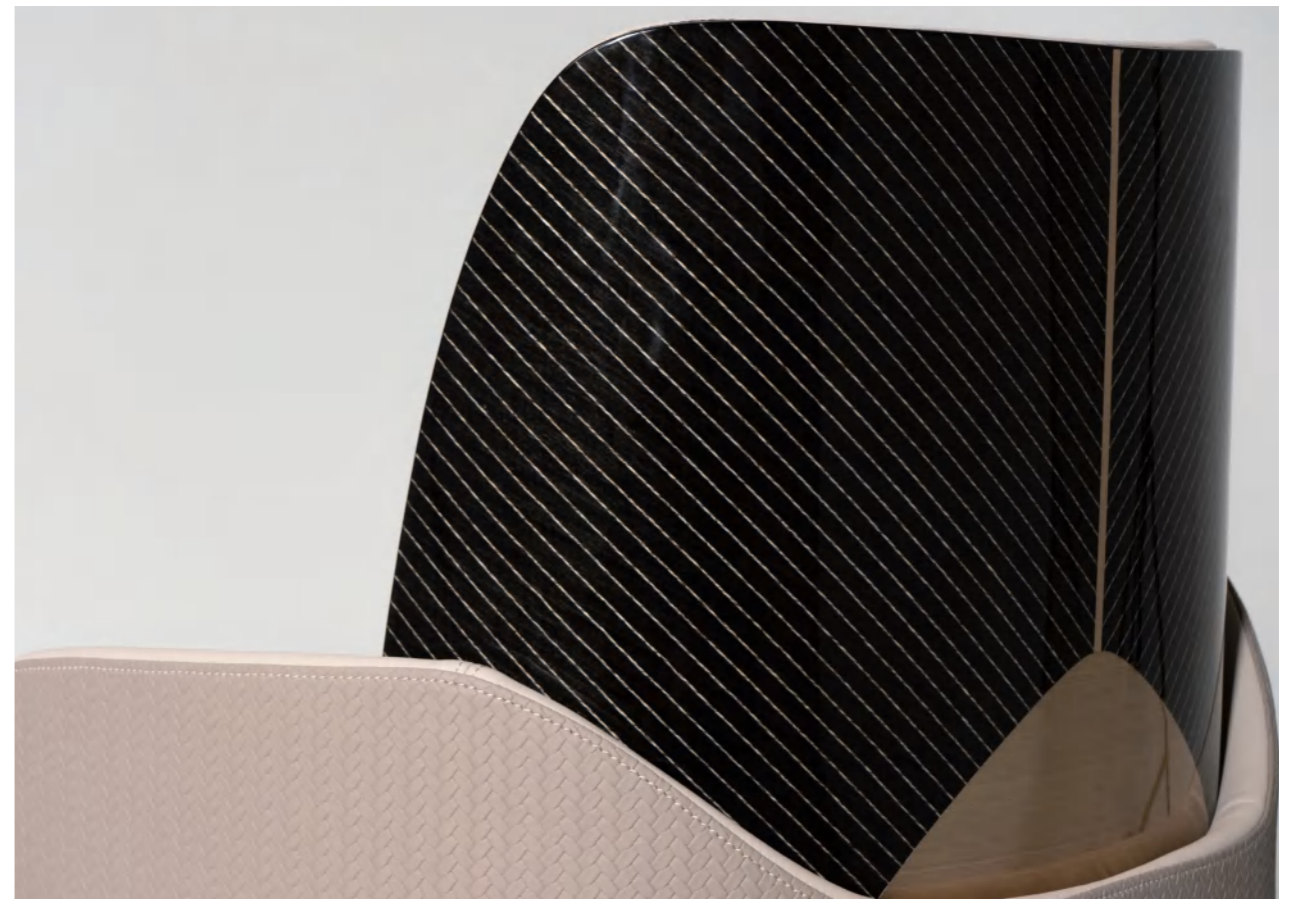
AK-024E Dining Table, ML-75 Dining Chairs

» INFORMATION

Dining Table: 1350*760+800mm/1500*760+1000mm

Dining Chairs: 550*620*860mm







» IMAGE COMPOSITION

AK-033E Dining Table, ML-63B Dining Chairs
AK-066T Sideboard AK-016Q AK-016Q2 Wine cabinet

» INFORMATION

Dining Table: 1350*750+800mm/1500*750+900mm
Sideboard: 1780*465*880mm

Dining Chairs: 500*610*930mm
Wine cabinet: 940*400*1930mm







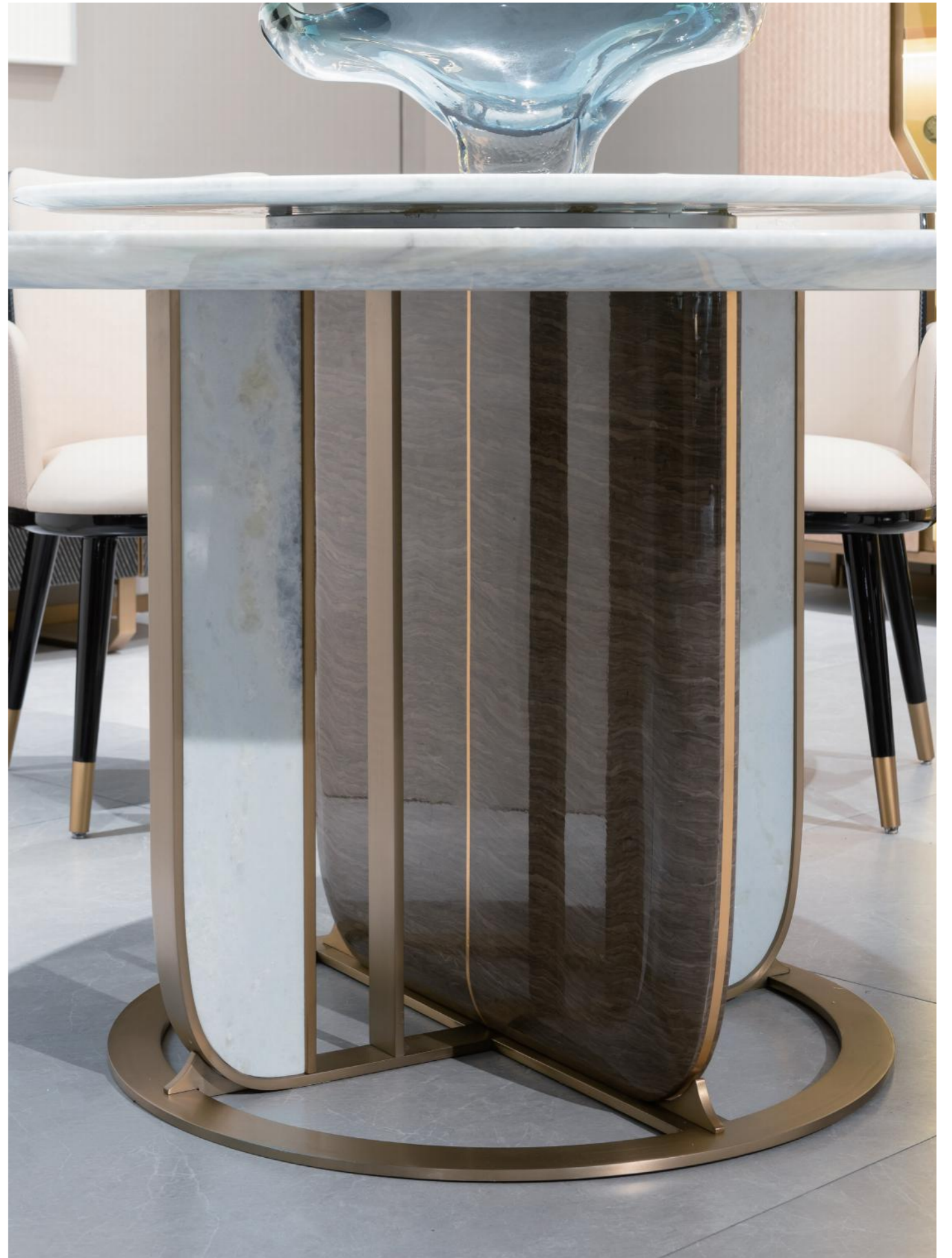
» IMAGE COMPOSITION

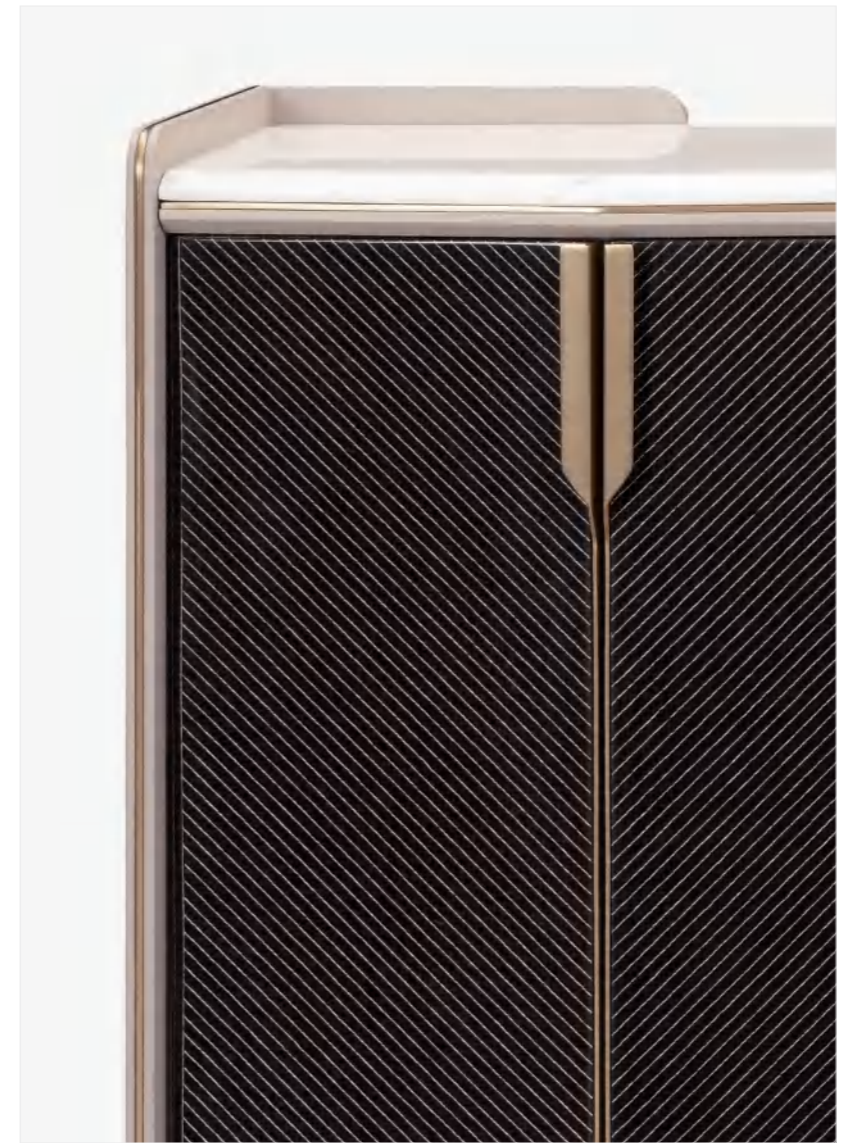
AK-036E Dining Table, ML-75 Dining Chairs
AK-066T Sideboard AK-016Q AK-016Q2 Wine cabinet

» INFORMATION

Dining Table: 1350*760+800mm/1500*760+900mm
Sideboard: 1780*465*880mm

Dining Chairs: 550*620*860mm
Wine cabinet: 940*400*1930mm







» IMAGE COMPOSITION

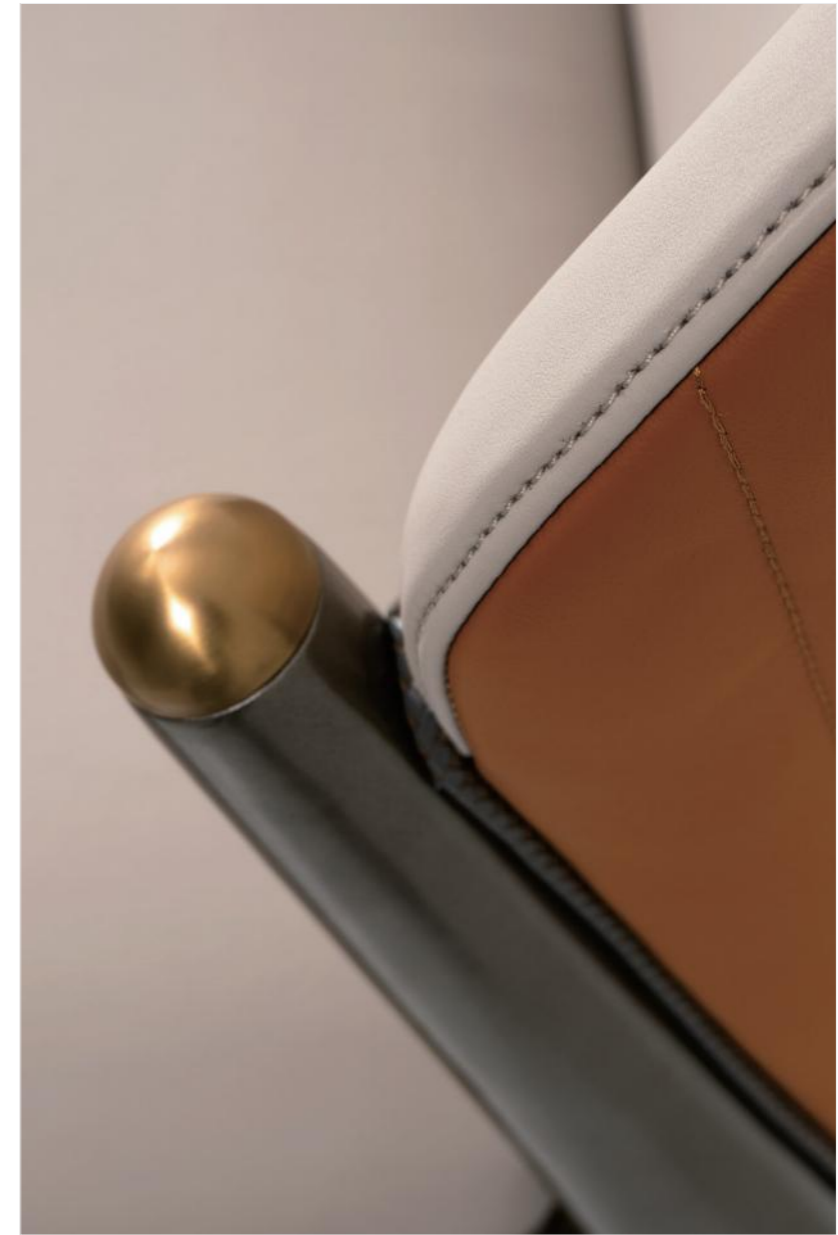
AK-004E-1 Dining Table, ML-69A ML-69B Dining Chair
AK-066N Sideboard

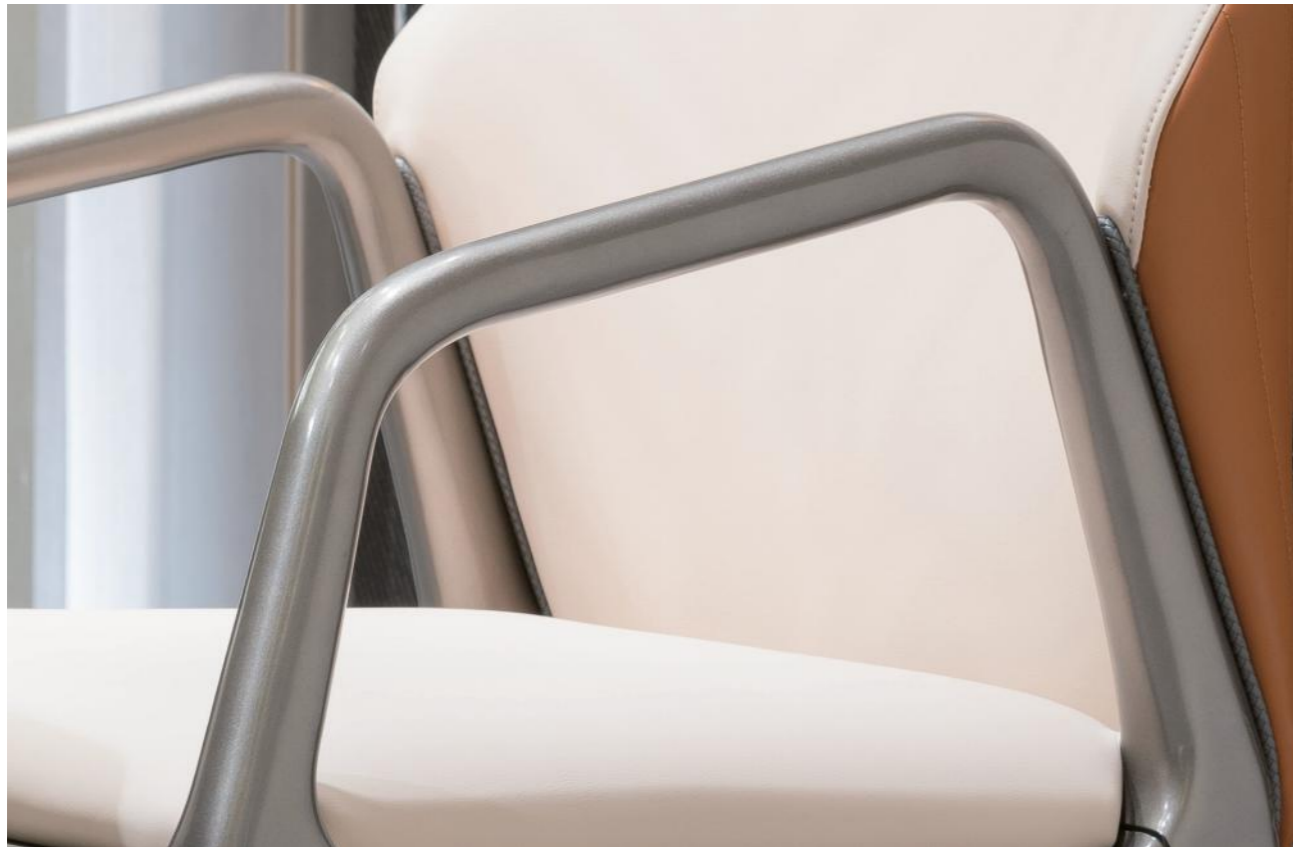
» INFORMATION

Dining Table: 1600*900*760mm/1800*950*760mm
Sideboard: 1510*465*850mm

Dining Chair: 530*610*890mm 560*610*890mm









» IMAGE COMPOSITION

AK-010E Dining Table, ML-76A Dining Chairs

» INFORMATION

Dining Table: 1600*900*760mm/1800*1000*760mm/2200*1000*760mm

Plant stand : 550*660*990mm







» IMAGE COMPOSITION

AK-021E Dining Table, ML-66 Dining Chairs

» INFORMATION

Dining Table: 1600*850*760mm/1800*900*760mm

Custom cabinet: /







» IMAGE COMPOSITION

AK-036E-1 Dining Table, ML-75 Dining Chairs

» INFORMATION

Dining Table:2000*1000*760mm/2400*1100*760mm

Dining Chairs:550*620*860mm



SURFACE DECORATION MATERIAL

LEATHER



A-805



A-807



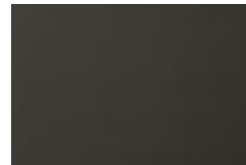
A-810



A-811



A-816



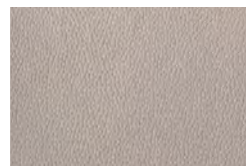
A-818



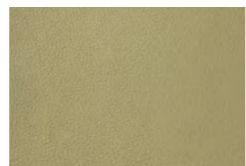
A-819



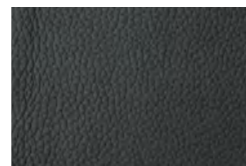
B-604



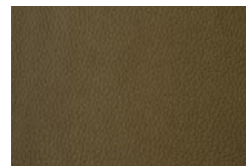
B-606



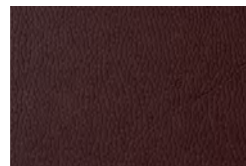
B-607



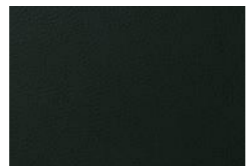
B-615



B-616



B-617



B-618



B-623

MARBLE



Fei Cui Lan



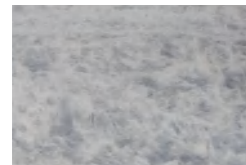
Huang Shui Jing



Huang Jin Jia



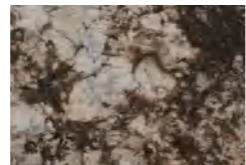
Ao Li Ao



Xing He Lan



Xue Shan Lan



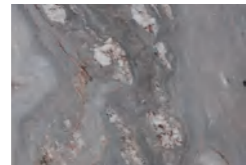
Pan Duo La



Lan Bao Shi



Bai Yu



Lan Jin Sha



Ya Ma Xun Lv

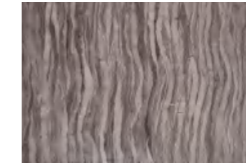
VENEER PAINT



14.01



Jin Si Hei Tan



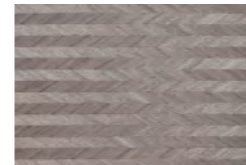
Huo Yan Hui



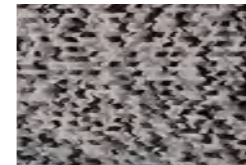
Xuan Cai Lan



Xuan Cai Hong



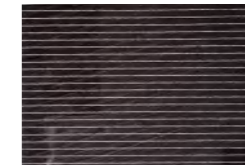
Lv Jian



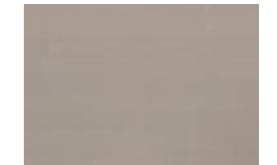
Xuan Cai Hui



Shui Bo Wen

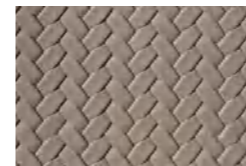


IN009

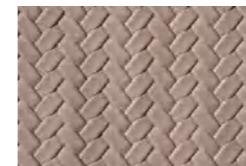


Ni Huang

EMBOSSING



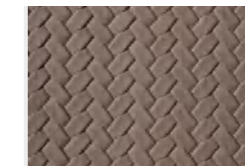
LV23-06



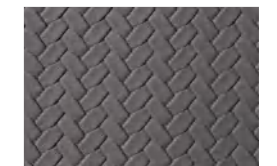
LV23-07



LV23-10



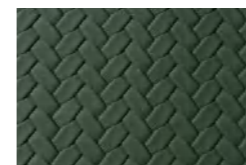
LV23-11



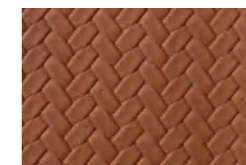
LV23-23



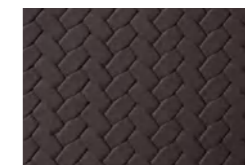
LV23-32



LV23-34



LV23-37



LV23-40



LV23-41



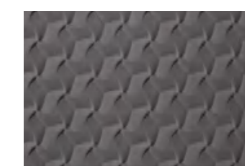
LV24-03



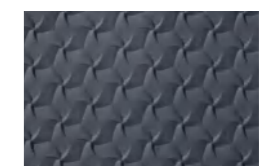
LV24-09



LV24-11



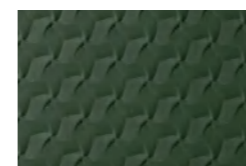
LV24-26



LV24-27



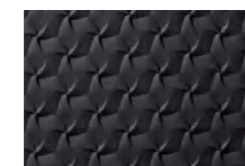
LV24-32



LV24-34



LV24-37



LV24-71

Per ulteriori informazioni
vi invitiamo a visitare il nostro sito web

www.muchicasa.com

T. +86 177 2711 5226
E. karuidi@turricasa.com

Headquarter showroom
RM409,Block E LeLong International Creative Park, LongJiang,
ShunDe District, Foshan city,GuangDong,China

Follow us on:



WeChat



Whatapp



1. tutte le dimensioni riportate nella sezione tecnica sono in mm, sono approssimative e con possibilità di variazioni (tolleranza del 2%).
l'azienda si riserva il diritto di effettuare modifiche e aggiornamenti tecnico-produttivi al presente catalogo senza preavviso. le immagini
e i colori dei prodotti stampati nel catalogo sono indicativi.

2. la rappresentazione delle finiture non può garantire la piena conformità con le finiture reali.

3. i materiali utilizzati in ogni prodotto sono di alta qualità, lavorati da personale esperto e controllati accuratamente lungo tutto il processo produttivo.
eventuali segni riscontrati nei rivestimenti in pelle, nelle essenze e nei marmi non devono essere considerati difetti, ma caratteristica naturale del materiale
stesso.

4. nell'ambito di un continuo processo di miglioramento dei propri prodotti, karuidi si riserva il diritto di modificare gli stessi senza alcun preavviso.

5. le foto e i testi contenuti nel presente elaborato non sono contrattualmente vincolanti.

6. i modelli sono esclusivi di karuidi. nessuna parte di questo catalogo può essere riprodotta in alcuna forma senza l'autorizzazione scritta di karuidi.

MUCHICASA.COM