

MODULAR SOFA SYSTEMS

MUCHICASA

MUCHICASA



Connery
04-11



West
12-19



Blazer
20-27



Twigg
28-35



Freeman
36-43



Roger
44-51



Lawrence
52-59



Horizonte
60-67



Goodman
68-75



Alexander
76-83



Mattia
84-91



Saint-germain
92-99



Torii Bold
100-107



Dylan
108-115

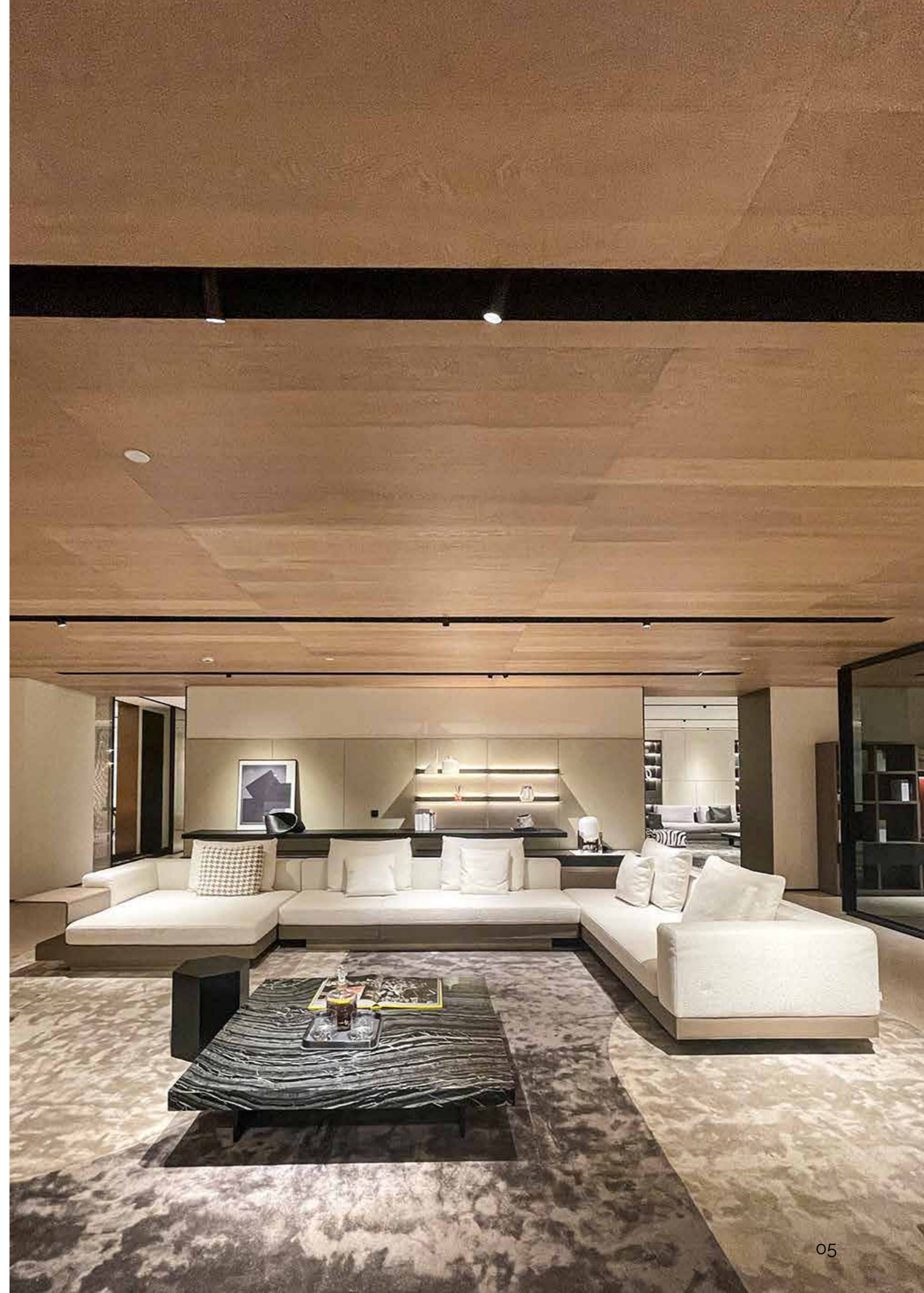


Lawson
116-123



Tufty Time Left
124-131

Connery/Sofas

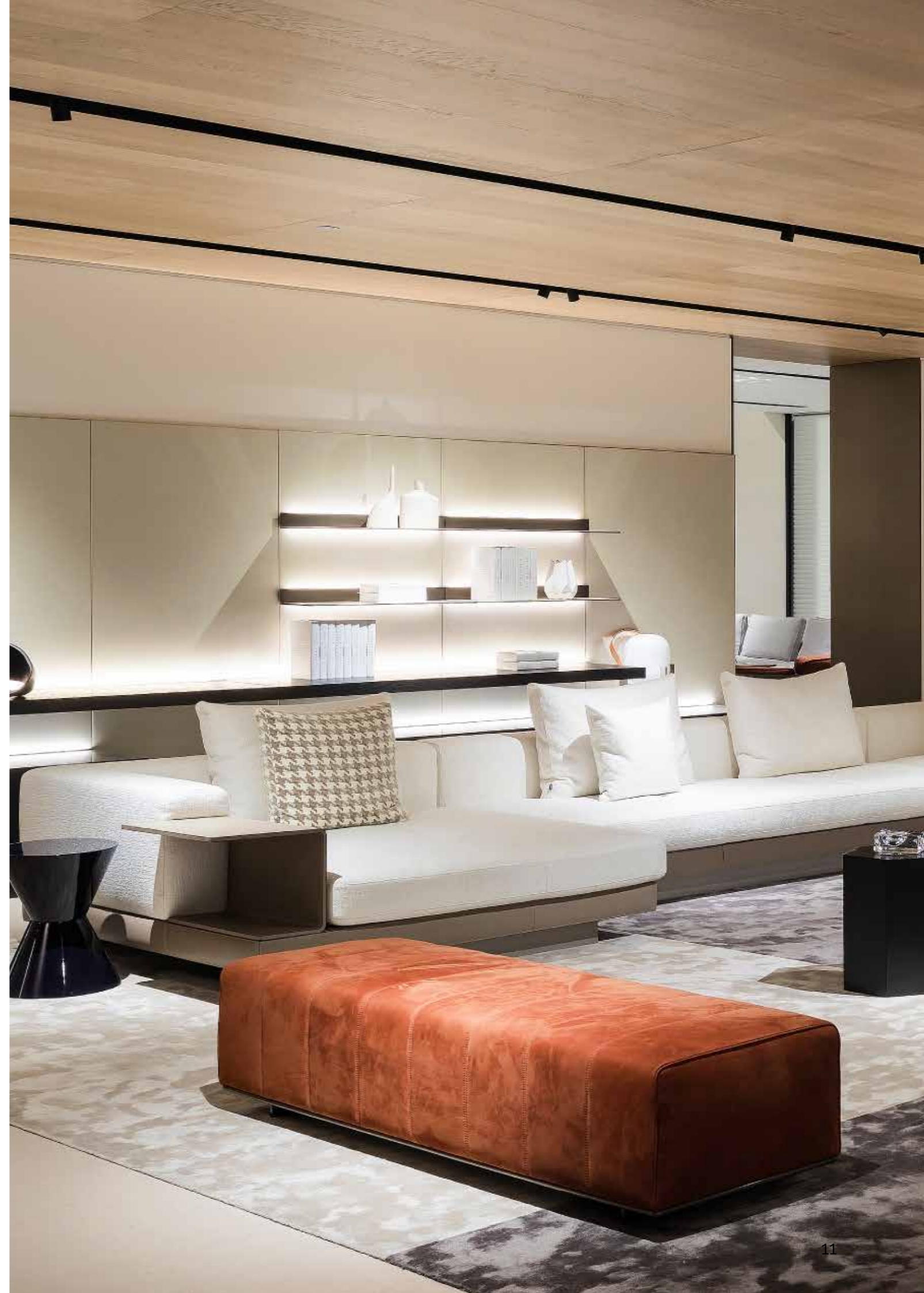




The Connolly sofa exudes the contemporary charm of modern architecture, with its pure lines evoking the style of mid-20th century America. This sofa collection possesses an instantly perceptible aesthetic form. The sophisticated combination of materials and exquisite craftsmanship adds a touch of high-end custom style to design projects.







West/Sofas





The Western Sofa series stands out for its playfully multifaceted construction, breaking free from formalistic cubism and infusing it with vitality. It not only offers more traditional combinations but also features several uniquely distinctive and highly creative design concepts, such as reclining sofas in pentagonal or hexagonal shapes, leather back elements, and ergonomic contours complemented by cushions. Unexpected elements go beyond conventional combinations, creating a completely refreshed style that not only breaks the continuous effect of fabric surfaces but also visually lightens the weight of the back. The combination of professional design knowledge and exquisite upholstery cutting craftsmanship results in extraordinary aesthetic design solutions.





Blazer/Sofas





The Blaze Sofa series employs precise geometric shapes to interpret the allure of design, seamlessly combined with meticulous high-end custom upholstery cutting techniques. All surfaces feature visible stitched design elements, with the coverings of the base, seat cushions, armrests, and backrest displaying a regular striped pattern. Coupled with chic spun-sew effects, it embodies its aesthetic philosophy while delivering an immediate sense of comfort.





Twiggy/Sofas





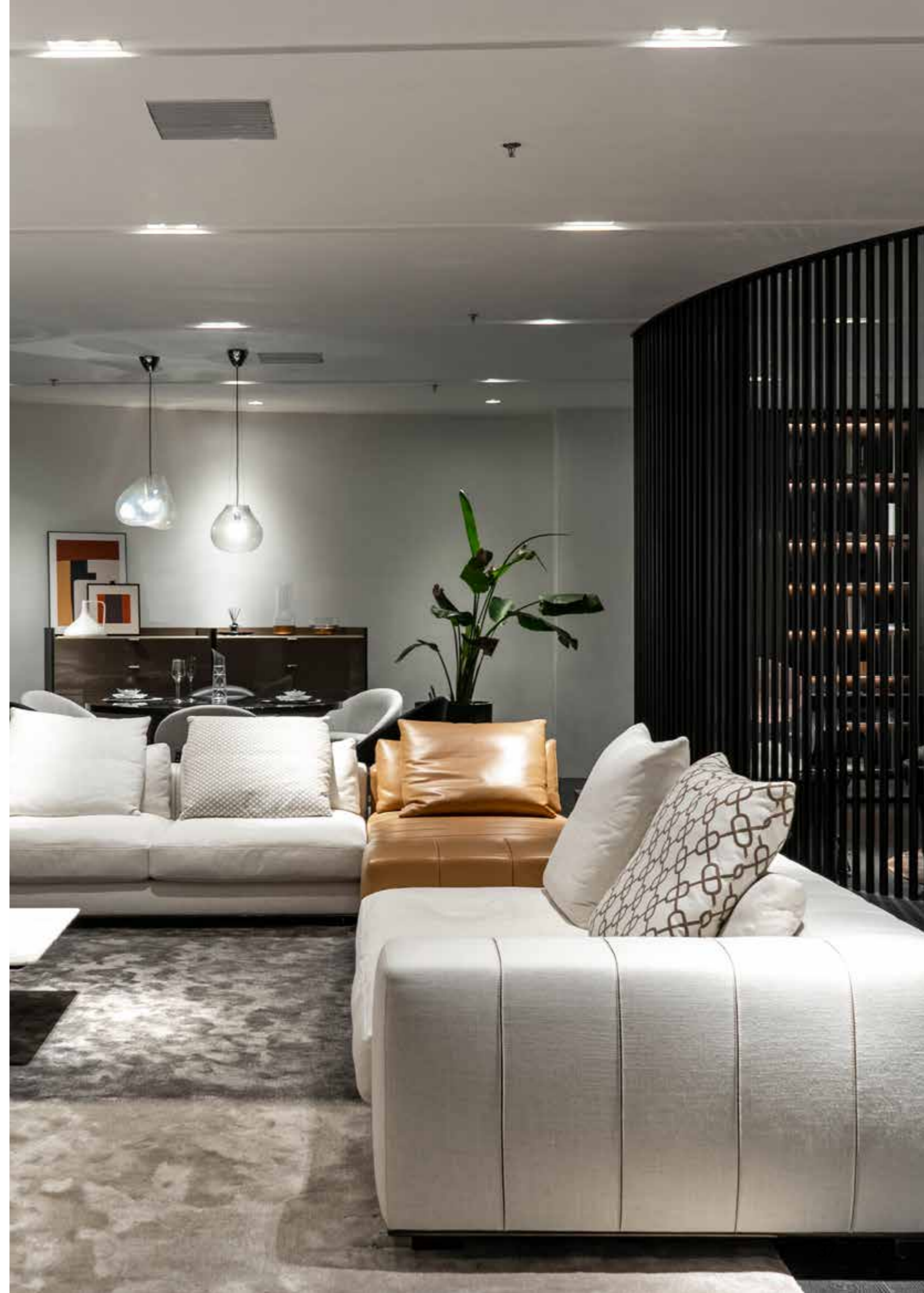
The Twiggy Sofa New Collection revitalizes living spaces with its extraordinary classical aesthetic philosophy. The checkerboard pattern is presented using different elements, always adhering to the refined style of Meimi&H. Initially launched in small, large, and deep dimensions, the single-seater armchair is offered in versions with and without armrests. Enriched through stitching techniques, this design project showcases the brand's profound craftsmanship, allowing sculptural seats to exude unparalleled comfort.







Freeman/Sofas





Innovating the design of living spaces, the Freedom Series incorporates a distinctive array of elements, coupled with a unique aesthetic flair, blending elegant proportion design with unparalleled comfort. This collection seamlessly combines soft and embracing lines with ultra-soft cushions, creating a warm and comfortable extraordinary experience.







Roger/Sofas





Much like a specific installation art, the Roger Sofa Seating System is conceived as an open project, grounded in imagination and personalized style. Tailored meticulously based on the client's specific requirements and the space it inhabits, it functions as a versatile and dynamic piece. Its highly multifaceted design caters to a variety of layouts and usage needs, while the eclectic design accommodates different styles. The spacious seating configurations offer endless possibilities for design.







Lawrence/Sofas





Much like a specific installation art, the Roger Sofa Seating System is conceived as an open project, grounded in imagination and personalized style. Tailored meticulously based on the client's specific requirements and the space it inhabits, it functions as a versatile and dynamic piece. Its highly multifaceted design caters to a variety of layouts and usage needs, while the eclectic design accommodates different styles. The spacious seating configurations offer endless possibilities for design.





Horizonte/Sofas





Exuding a modern classic essence, this series is presented through full and meticulous combinations of shapes, featuring a distinctive horizontal line design. The uniqueness of this collection lies in its vivid yet minimalist personality, seamlessly combining different elements, making it highly functional and adaptable to a variety of combinations while elegantly blending into different environments.

The sofa series offers two versions for selection: one with high armrests and another with low armrests, catering to diverse design schemes. The high armrest version has a smaller thickness, while the low armrest version, in addition to having a greater thickness, can also accommodate cushions for a comfortable lounging experience.





Goodman/Sofas





The brand-new modular sofa seat series of the sofa collection interprets its design through details. This project emanates a 1970s aesthetic, drawing inspiration from the graphic characteristics of that era. Simultaneously, it deconstructs and crosses various elements, simplifying complexity, to build its distinctive traits.





Alexander/Sofas





The Alexander Sofa series draws design inspiration from rationalism and modern concepts, allowing for different configurations to showcase various forms. Square and curved components are employed in the same combination, creating a cozy and intimate atmosphere.





Mattia/Sofas





The Manta series features a meticulously designed shell with a floral crown-like unfolding, embracing the seat cushion, and a unique circular pillow design for the backrest. The sculpted design presents a sense of artistry, achieving a balance between rigid structure and light volumes, endowing the seating with a rounded and cozy aesthetic.





Saint-gremain/Sofas





The Saint-Germain Sofa Series is characterized by its curved and sensuous forms, inspired by shapes reminiscent of 70s design, transforming any space into a warm and familiar environment, creating a homely sense of comfort. Soft, enveloping lines recur throughout all elements of this series, including various modules that can be used to create linear, angular, or unconventional compositions. The sofa's defining feature is consistently creating an enticing appearance through the interplay of shapes and depths.

From the sophisticated texture of woolen fabric resembling high-end fashion to the modern elegance of leather, the upholstery enhances the sofa's voluminous projection, projecting a lateral aesthetic charm.





Torii Bold/Sofas





Torii Bold is characterised by the contrast between the large, softly rounded volumes of the upholstery and the lightness of the metal base structure on which it rests.

A family of seats created from the original iconic Torii design by Nendo studio, that retains the morphology of the backrest unchanged, while presenting a more solid and compact aesthetic: the two families dialogue harmoniously with each other in a clever interplay of full and empty volumes.





Dylan/Sofas



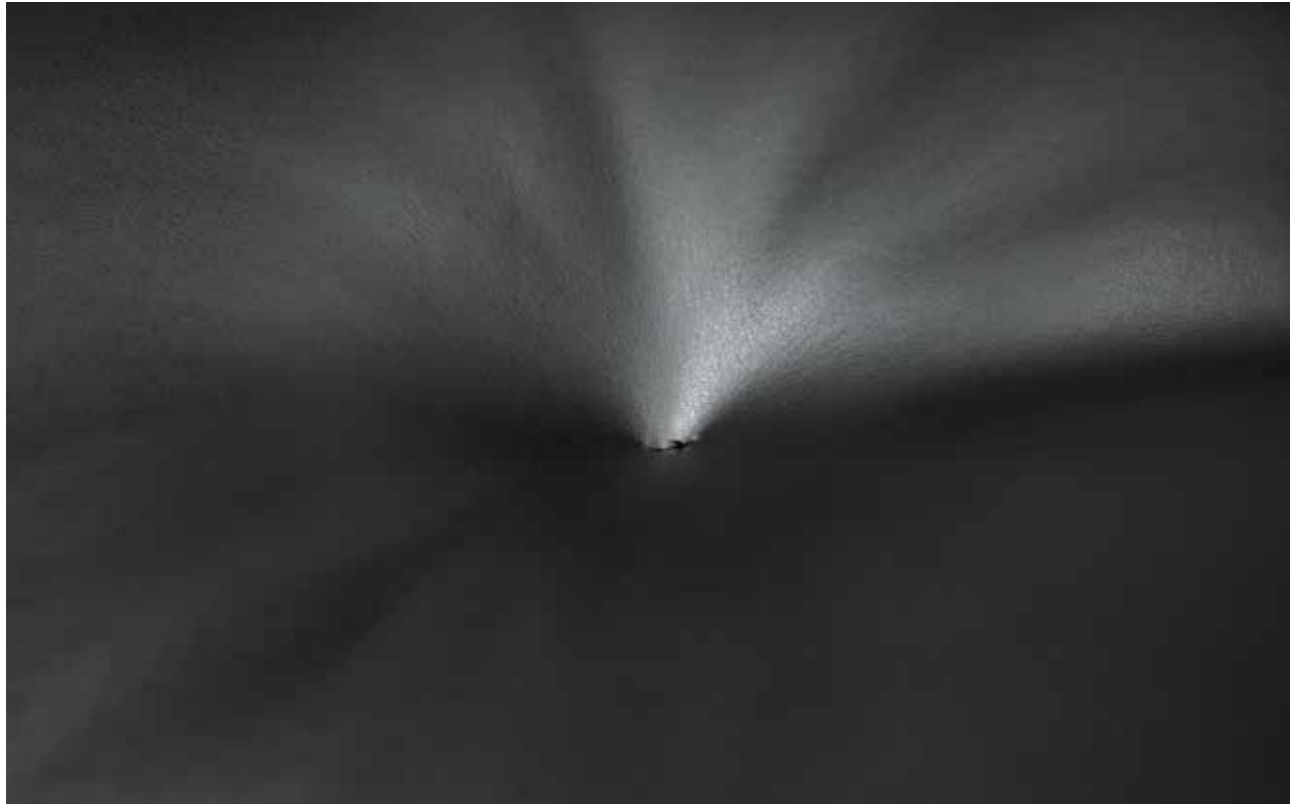


The rigorous shapes of the Dylan modular seating system, however, go beyond the stitching of the cushions, turning into volumes in which the geometries become sinuous and enveloping, thanks to the soft curves of the backrest and armrest that create a fulfilling sense of cosiness.

The complex and sophisticated manufacturing construction also animates the suspended base of Dylan, which uses the same tailoring technique developed for the Connery modular seating system: the leather or fabric strips are sewn together by means of webbing and punctuated by stitching that gives rhythm to the seat cushioning and adds a further couture note to the design of the project.

Every detail of Dylan combines the tailoring of the upholstery with the multifaceted vision of a rational architecture that passes from the space to the furniture, balancing and perfectly integrating it with the contemporary way of interpreting and experiencing living spaces.





Lawson/Sofas

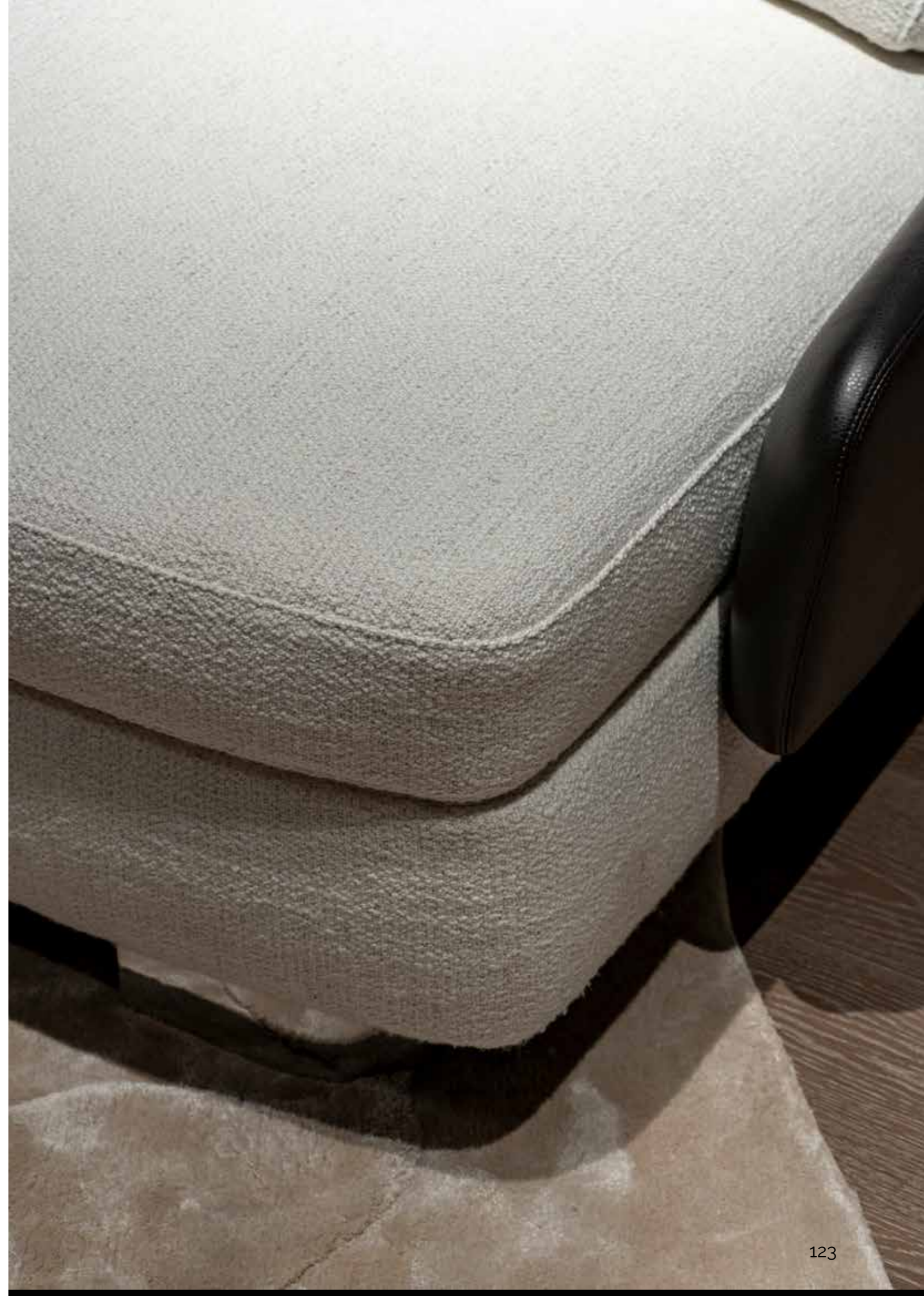




Exploring various combinations of sofa seating through its fluid design and balanced, rounded lines, ranging from casual small armchairs to more spacious and comfortable loungers, this series breaks away from classic styling, presenting innovative solutions. Its design creatively plays with the aesthetics of different materials, such as using leather to showcase the curves of an embracing backrest and its downward-extending armrests, while employing fabric to highlight the intricate high-end elements of the cushions.

The various configurations in this series can present different characteristics with changes in depth, suitable for intimate and cozy settings or incorporating intricate elements for more spacious and refined spaces.





Tufty Time Left/Sofas





Tufty Time Left provides effective solutions for modularity, comfort, and detachable sofa covers. With its emphasized depth, it becomes a gathering place, a cozy spot where people can relax and unwind.





Tufty Time Left



T. +86 13925469587
E. selwa@muchicasa.com

Headquarter showroom
RM409,Block E LeLong International Creative Park, LongJiang,
ShunDe District, Foshan city,GuangDong,China



MUCHICASA



@MUCHICASA



@MUCHICASA



@MUCHICASA



MUCHICASA

MUCHICASA

muchicasa.com

Modular Sofa Systems

MUCHICASA